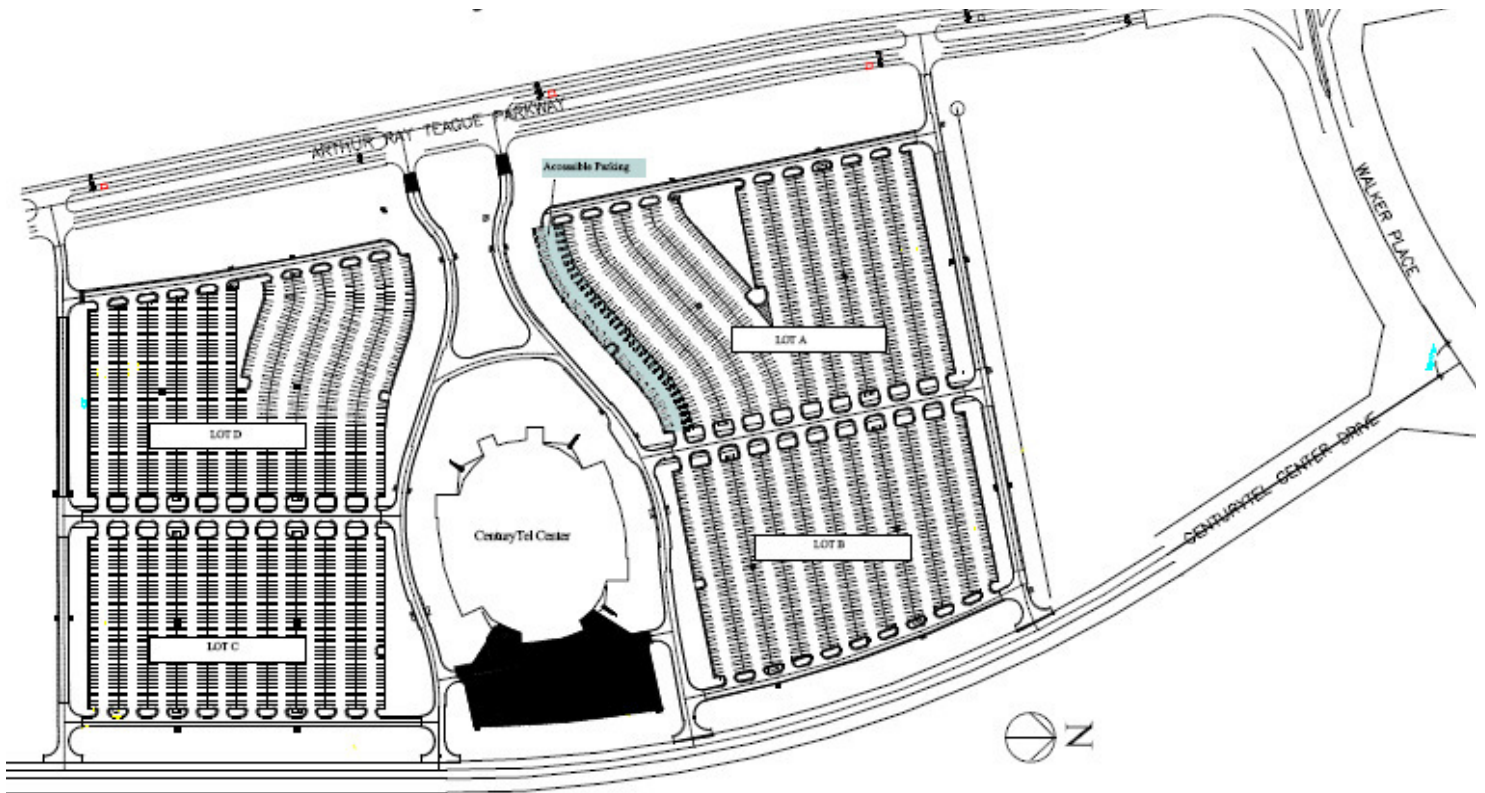


DIRECTIONS TO THE CENTURYTEL CENTER

2000 CENTURYTEL CENTER DR. • BOSSIER CITY, LA 71112 • 318/747-2501
FOR TICKET INFORMATION, PLEASE CALL 888/49-FAITH



DRIVING DIRECTIONS

From the NORTH

Make your way to Highway 3, travel south, traveling through Bossier City and past the junction of Highway 3/ Benton Road and I-220. At the I-20 junction, go west for 1.1 miles. Take exit 20A, the Hamilton Rd./Diamond Jack's Blvd exit. Turn left at the bottom of the exit. Travel to the Arthur Ray Teague Parkway. Turn left onto the parkway. The CenturyTel Center is located at the end of the Teague Parkway.

From the EAST

Travel on I-20 W. into Bossier City. Take Exit 20A the Hamilton Rd./Diamond Jack's Blvd. exit. Turn left at the bottom of the exit. Travel to the Arthur Ray Teague Parkway and turn left. The CenturyTel Center is located at the end of Arthur Ray Teague Parkway.

From the WEST

Take I-20 E. through Shreveport and into Bossier City. Take Exit 20A, the Hamilton Rd./Diamond Jack's Blvd. exit. Turn right at the bottom of the exit. Travel to the Arthur Ray Teague Parkway. Turn left onto the parkway. The CenturyTel Center is located at the end of Arthur Ray Teague Parkway.

From the SOUTH

Take the I-49 North exit. Approaching Shreveport, take the Bert Kouns Industrial Loop exit. Turn right at the bottom of the exit. Stay on Bert Kouns Industrial Loop until the road Ys. Take the right side of the Y onto E. 70th Street. You will be heading east. Cross bridge and turn left onto CenturyTel Dr.

PARKING INFORMATION

CARPOOLING IS ENCOURAGED.

- There is no cost for parking.
- In/Out privileges are allowed.
- Parking is available in Lots A, B, C & D.
- Bus drop off is located at the circle drive in front of the CenturyTel Center. Bus parking is available in the back of all lots.

DISABILITY PARKING

- Drop off available by the administrative offices off of Arthur Ray Teague Parkway.
- Special needs parking is located in Lots A.

Parking prices and map are subject to change

